



The WilComm Fax Module allows WilComm documents such as purchase orders, invoices, statements and other high volume forms or reports to be faxed automatically, without human intervention.

It offers greater flexibility in document distribution by enabling documents to be delivered more quickly and at a lower cost than traditional "print and post" methods, since mail delays, postage costs, handling and printing costs can all be reduced. In cases where documents were previously faxed manually, employee productivity can also be improved.

Fax Distribution with WilComm + Fax Module

The Fax Module is an optional component of the WilComm document output management suite. When a document is generated from your application output it is sent automatically to WilComm, where distribution rules assign a delivery method to each job. By intelligent inspection of files and their attributes, WilComm determines that the document should be sent by fax and extracts the fax addressing details. WilComm then merges the document with the appropriate electronic form and sends it to the fax server for transmission.

SMTP Fax Distribution with WilComm + Email Module

SMTP faxing (using msXfax server), is provided by the WilComm Email Module. This sends the document in PDF format to Microsoft Exchange Server, where it is converted to TIF format and sent on to msXfax for transmission.

Integration with Existing Infrastructure

WilComm is designed to work with all standard platforms – UNIX, Mainframe, PC and System i (iSeries). Fax capability requires no changes to the host application code.

Automation

Fax addressing details are extracted directly from pool files, applications or external databases. Multiple phone books, both private and shared, can be used. Output queues are automatically monitored and fax jobs sent without the need for human intervention. WilComm supports the use of multiple lines and fax servers for automated, enterprise faxing.

AT A GLANCE

- Automated fax using custom e-forms
- Reduction in use of pre-printed stationery
- Support for popular fax servers
- SMTP fax support
- Flexible fax addressing
- Complete status reporting

Send Options

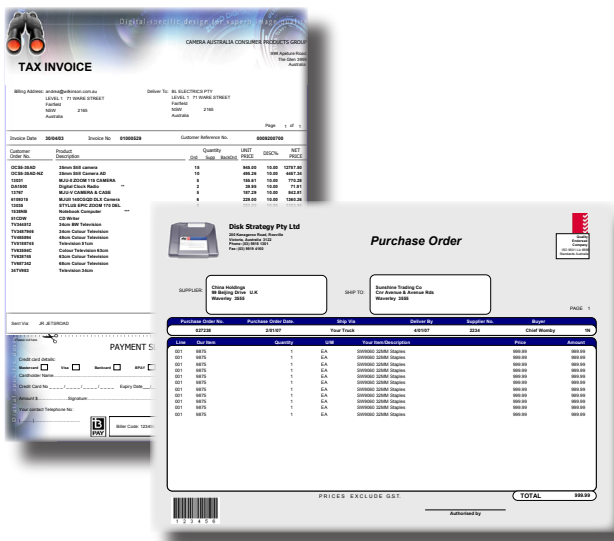
Send options include setting priorities for different document types or users, choice of fine or normal resolution, faxing both with and without a cover page, failure notification by email, retention of sent faxes.

Cover Pages & Attachments

Users have the option to customise the cover page layout and personalise content using variable data (i.e. contact name, invoice number etc.). Alternatively, the cover page facilities within the enterprise fax server software may be used directly.

Status Reporting

The WilComm Message List provides job tracking features such as transmission history, viewing, delivery confirmation, failure notifications, resending, intelligent retransmissions after fax failures including retransmission of failed pages only. Alternatively, the status reporting tools provided by your fax server software may also be used.



Complementary Wilkinson Products:

The WilComm suite is modular by design and consists of the WilComm Server and a choice of service modules – print, fax, email and file. A basic installation includes WilComm Server and one service module e.g. Fax module.

WilComm Server: data mapping and forms merge capability, distribution logic and forms engine. By using a PC server overhead on the host system is reduced. Multiple server configurations are available for high volume or distributed sites.

Print Module: prints to any Windows-based print device on the network, including laser, inkjet, barcode, thermal, dot matrix, till slip and other printers. Print up-to-date forms on demand and reduce or eliminate the need for pre-printed stationery.

Email Module: Enables fast, low-cost distribution of WilComm documents using SMTP & MAPI email platforms. Provides group addressing for company wide messaging; PDF, Text, CSV & XLS file attachments, status reporting including not sent warnings, resend ability and personalised subject & message content.

File Module: Provides automated naming and storage of files in PDF or TXT format, for subsequent retrieval through MS Windows.

Archive Module: Automatically archives WilComm documents and offers browser-based retrieval with full text and indexed search capabilities. The Archive Module also archives any document format, including MS Office, AutoCAD and scanned images.

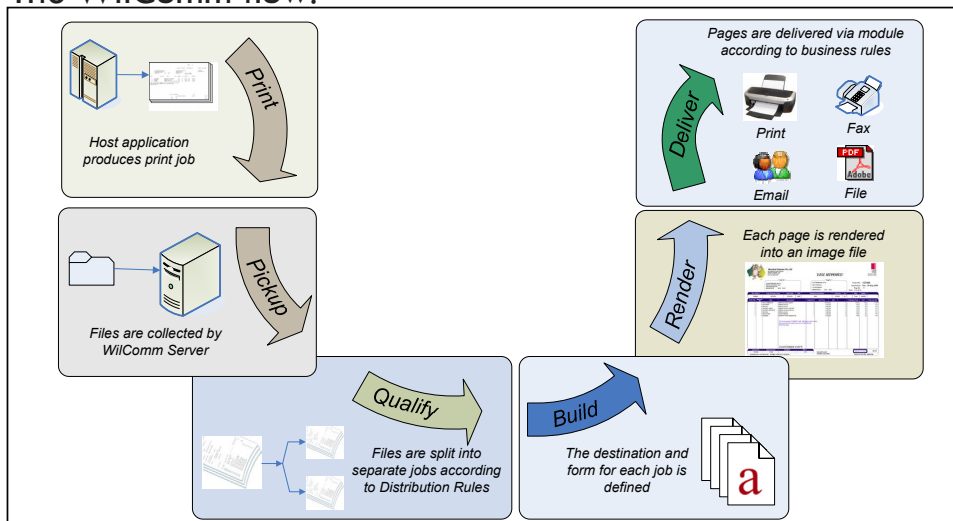
Requirements for Fax Module

Wilkinson products:	WilComm Server Fax Module
Operating Environment:	Windows 2000/XP/2003 512Mb RAM Minimum 200Mb minimum
Fax Server Compatibility:	MESSAGEmanager (supplied with one fax line) MS Fax Server msXfax
Fax Card Compatibility:	Intel Dialogic Brooktrout Eicon Diva TAPI compatible modems

About Wilkinson

Wilkinson is a specialist developer of electronic document solutions. More than 400 customers rely on the company's WilComm and WilStore suite of products to send, receive, store and retrieve documents quickly and cost-effectively. Established in 1969, Wilkinson has its headquarters in Melbourne, Australia, and markets its products via a select network of distributors and resellers worldwide.

The WilComm flow:



WILKINSON

ELECTRONIC DOCUMENT SOLUTIONS

Tel: +61 (0)3 9818 1301 • Fax: +61 (0)3 9819 4160 • www.wilkinson.com.au • 8/318 Auburn Road, Hawthorn VIC 3122 • PO Box 300, Hawthorn VIC 3122 Australia

WilComm and Send & Receive | Store & Retrieve are registered trademarks of Wilkinson Electronic Document Solutions Pty Ltd in Australia and other countries. All other products or services mentioned are trademarks of their respective owners. © 2006 Wilkinson Electronic Document Solutions Pty Ltd. All rights reserved. Nov 2006.